

WWW.SAXUM.US



MANUFACTURING & INFRASTRUCTURE
PROJECTS & EXPERIENCE



SAXUM is a multidisciplinary company with extensive and proven experience in the Cement, Mining and Manufacturing & Infrastructure Industry. Our capabilities include full Engineering services as well as Procurement and Construction Management portfolio.

Through its companies in the USA, Brazil and Argentina SAXUM is attending the technical needs of the cement industry in the Americas and world wide.

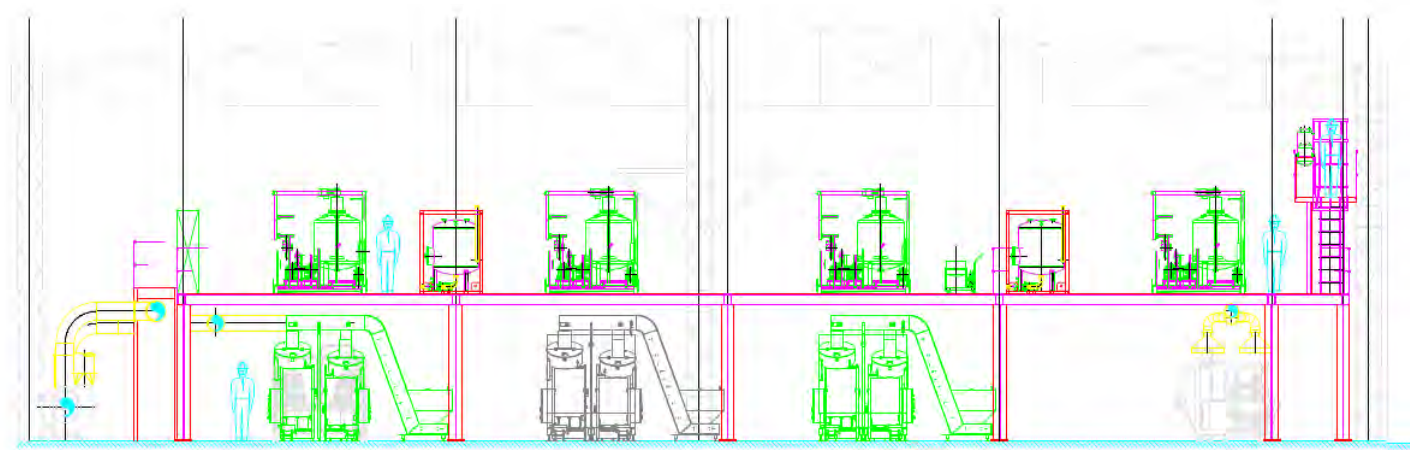
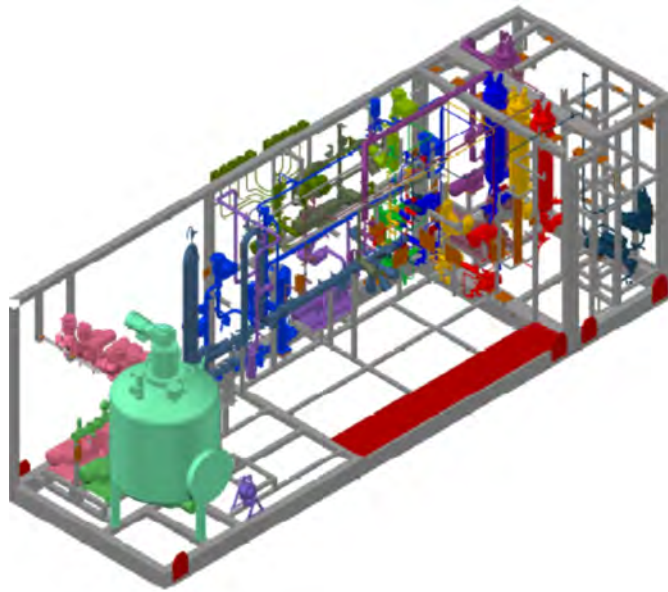
Our clients are the most important producers. This is the best demonstration of our experience and recognition.



WE OFFER

- A flexible, tailor-made service for all your engineering and construction management needs in the industry. Our professionals are specialists in their disciplines and our goal is to bring quality engineering services to the Cement, Mining and Manufacturing & Infrastructure Industry as we have been doing for years.
- Full engineering services including Cement, Mining and Manufacturing & Infrastructure process, civil/structural, mechanical and piping engineering as well as electrical engineering, instrumentation and control. Our services includes feasibility studies, trade-off evaluations, plant operation reviews & optimization, conceptual, basic and detailed engineering and value engineering.
- **SAXUM** has also Project and Construction Management expertise in the framework of EPCM services. We manage projects achieving high quality standards within the planned schedule and budget.

PROJECTS



Procter & Gamble – Argentina – Pilar plant

“SERENDIPITY” PROJECT

Basic and Detailed mechanical, piping, electrical and structural engineering. Bid documents generation and Vendors technical proposals evaluation. New liquid detergents production lines. Integration with existing production lines. Plant utilities network expansion.

PROJECTS



Procter & Gamble – Argentina – Pilar plant

“HERCULES & REGENERIST” PROJECT

Basic and Detailed mechanical, piping, electrical and structural engineering. Bid documents generation and Vendors technical proposals evaluation. Liquid healthcare products (detergents, soaps and shampoos) tank farm expansion. Plant utilities network expansion.

PROJECTS

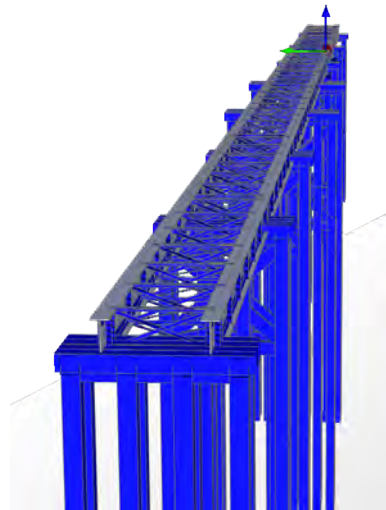
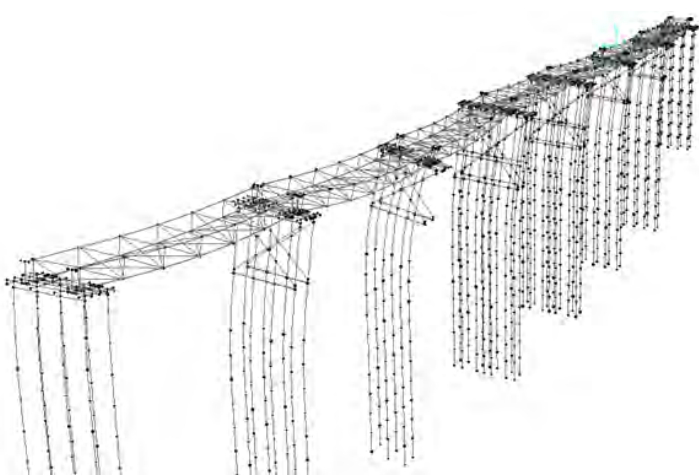


www.saxum.us

Procter & Gamble – Argentina – Villa Mercedes

Technical consultancy for Site & building technical issues . Civil & Structural. Mechanical & Piping. Electrical

PROJECTS



Ferrosur Roca – Argentina – Buenos Aires

“INGENIERO BRIAN” PROJECT

Structural verification for “Ingeniero Brian” rail bridge on the Riachuelo river. On site structure survey. Vibrations measurement and natural frequencies determination. Dynamic loads study. Ultrasound testing. Mathematical modeling of structure using retrieved data.

PROJECTS



Monsanto-Argentina-Pergamino & Maria Eugenia Plants

Site technical assistance for the construction of the following buildings: Seeds classifier tower with Laboratory; Treatment building; Maintenance workshop and Electrical substation Lodge.

PROJECTS



Genética Mandiyú – Argentina – Avia Terai

Basic engineering and Bid documentation for Cotton seeds conditioning plant overhaul and expansion (acid delinting process). Mechanical and Piping. Civil and Structural. Electrical Instrumentation and control.

PROJECTS



Bilfinger & Berger – Qatar – Doha

NEW RESIDENTAL BLOCK PROJECT

Diagnosis and constructive remediation recommendations for structural pathologies in: Two 18000 m³ potable water reservoirs. Floor slabs in housing buildings

PROJECTS



DYCASA – Argentina – Buenos Aires

NEW METROPOLITAN SUBWAY STATION PROJECT

Structural engineering and tunnels design for new metropolitan subway stations (Line A). Detailed engineering. 3D Computational models development in order to optimize materials utilization. Technical-economic analysis.

PROJECTS



Pluspetrol – Argentina – El Bracho

Power plant in Tucumán province. Structural verification of plant buildings and lifting devices.

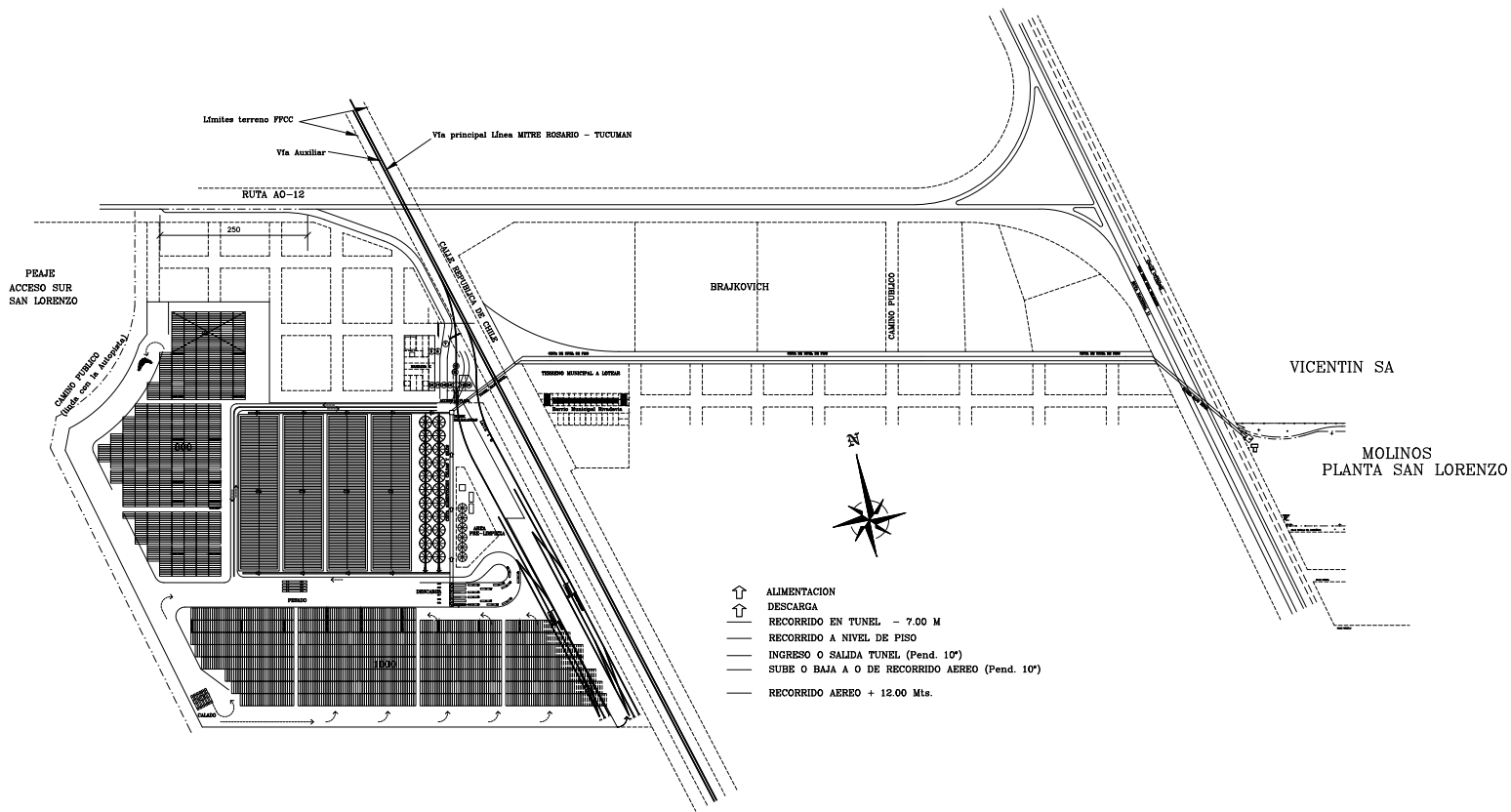
PROJECTS



Aceitera General Deheza – Argentina – Gral. Deheza

Soybean shelling plant in Córdoba province. Overall Project Management (schedule – budget – resources). Third parties engineering designs integration. Civil Construction and electromechanical assembly supervision

PROJECTS



Molinos Rio de la Plata – Argentina – San Lorenzo

Engineering and Project Management services for storage facilities and new soya-duct in San Lorenzo plant.

PROJECTS



Molinos Rio de la Plata – Argentina – Tortuguitas

LUCCHETTI PLANT PROJECT

Basic engineering and Construction supervision for the “Installation of the 4th processing line of long dry pasta” project, Luchetti plant, Tortuguitas.

PROJECTS



Bunge - North America - Missouri

Project Management services for the new hot shelling soybean Project, Missouri plant, USA.

- **MONSANTO.** Peru. Construction management for “Seminis” seeds conditioning plant.
- **MONSANTO.** Argentina. On site engineering and construction management for plant expansions in Pergamino and Rojas.
- **MONSANTO.** Argentina. Basic and detailed engineering, and technical supervision for Rojas plant expansion.
- **MONSANTO.** Argentina. Structural vibrations analysis in seeds classification building in Rojas plant.
- **GENÉTICA MANDIYÚ.** Argentina. Basic engineering and Bid documentation for Cotton seeds conditioning plant overhaul and expansion (acid delinting process) , in Avia Terai plant.
- **PROCTER & GAMBLE.** Argentina. “Serendipity” project. In Pilar plant. Basic and Detailed mechanical, piping, electrical and structural engineering. Bid documents generation and Vendors technical proposals evaluation.
- **PROCTER & GAMBLE.** Argentina. “Hercules & Regenerist” project. In Pilar Plant. Basic and Detailed mechanical, piping, electrical and structural engineering. Bid documents generation and Vendors technical proposals evaluation. Liquid healthcare products (detergents, soaps and shampoos) tank farm expansion.
- **PROCTER & GAMBLE.** Argentina. Technical consultancy for Site & building technical issues in Villa Mercedes plant.
- **PROCTER & GAMBLE.** Argentina. Load bearing capacity study for floor slabs in Villa Mercedes plant. Developed through SASW (Spectral Analysis of Soils Waves) dynamic soil study.
- **ACEITERA GENERAL DEHEZA.** Argentina. Soybean shelling plant in Córdoba province. Overall Project Management (schedule – budget – resources). Third parties engineering designs integration. Civil Construction and electromechanical assembly supervision.
- **FERROSUR ROCA.** Argentina. Structural verification for “Ingeniero Brian” rail bridge on the Riachuelo river, in Buenos Aires. On site structure survey. Vibrations measurement and natural frequencies determination. Dynamic loads study. Ultrasound testing. Mathematical modeling of structure using retrieved data.

- **BILFINGER & BERGER.** Qatar. New residential block project in Doha. Diagnosis and constructive remediation recommendations for structural pathologies in Two 18000 m³ potable water reservoirs, and Floor slabs in housing buildings
- **DYCASA.** Argentina. Structural engineering and tunnels design for new metropolitan subway stations (Line A) in Buenos Aires. Detailed engineering. 3D Computational models development in order to optimize materials utilization. Technical-economic analysis.
- **DYCASA.** Argentina. Structural engineering and tunnels design for new metropolitan subway stations (Line H) in Buenos Aires.
- **ESTUDIO ARQ. PARYSOW.** Argentina. Civil/Structural engineering for Sheraton Buenos Aires hotel expansion.
- **HOCHTIEF Construcciones S.A.** Argentina. Civil/Structural engineering for Marriott Mendoza hotel. Highest building in Mendoza, in a high seismic risk zone.
- **HOCHTIEF Construcciones S.A.** Argentina. Structural engineering for La Rioja National University campus buildings. Project included 54,000 m² of offices, amphitheatre, classrooms, living rooms, etc.
- **HOCHTIEF Construcciones S.A.** Argentina. Civil/Structural engineering for Hyatt Park Mendoza hotel expansion (new casino).
- **COMINTEL Construcciones S.A.** Argentina. Structural engineering for 5-star, 24,000 m² American hotel in Termas de Río Hondo, Santiago del Estero province.
- **ESTUDIO ARQ. BINOLLI.** Argentina. Structural engineering for computational model development and structural system pathology evaluation in Fortabat Museum in Puerto Madero, Buenos Aires.
- **ESTUDIO ARQ. PARYSOW – ESTUDIO ARQ. CARLOS OTT.** Argentina. Cerrito building in Buenos Aires. Redesign and optimization for foundations, perimeter walls (using post-tensioned active anchors technique) and post-tensioned mezzanines.
- **ESTUDIO ARQS. AMATO Y FERLUGA.** Argentina. Structural engineering for Carlos V hotel in Santiago del Estero.
- **Cotella & Schujman SRL.** Argentina. General Paz Tower 21-story building in Tucumán. Structure developed using bubble-deck slabs, without beams. First high-rise building constructed with mezzanines without beams and with seismic-resistant capacity.

CLIENTS

- **PLUSPETROL.** Argentina. Power plant in Tucumán province. Structural verification of plant buildings and load lifting devices.
- **MOLINOS RIO DE LA PLATA.** Argentina, Rosario. Engineering and Project Management services for 25th and 26th grain cells repairing Project, Santa Clara plant.
- **MOLINOS RIO DE LA PLATA.** Argentina, Villa Adelina. Engineering and Construction supervision services at Matarazzo plant.
- **MOLINOS RIO DE LA PLATA.** Argentina, Villa Tesei. Mechanical engineer and designer assistance services at Tres Cruces plant.
- **AGD.** Engineering and Project Management for energy cogeneration Project.
- **AGD.**Argentina, Gral Deheza. Engineering and Project Management services for hot shelling soybean and plant upgrade projects.
- **AGD.**Argentina, Gral Deheza. Detail engineering for construction and assembly for transport systems, "Peanut Shell – FW boiler" Project.
- **BUNGE ARGENTINA.** Engineering and Project Management services for hot shelling soybeans Project.

CONTACT US

United States

Dallas, Texas

Office: +1 972 727 3331

Mob: +1 484 515 2840

Fax: +1 972 717 3137

jared.weston@saxum.us

Australia

Perth, WA

Office: +61 047 444 0235

Mob: +61 474 440 235

+61 402 014 016

melanie.etse@saxum.us

david.magee@saxum.us

Brazil

Belo Horizonte

Office: +55 31 3309 4578

Mob: +55 11 9764 89327

+55 11 9915 76066

admbrasil@saxum.us

Argentina

Buenos Aires & Tucumán

Offices: +54 381 4874929

Mob: +54 911 58831583

+54 911 50115333

constanza.unzaga@saxum.us

nestor.lares@saxum.us

